

**ELECTRO-HYDRAULIC MOBILE CRANES**

## MINIDREL B series - capacity between 4.000 and 25.000 Kg

The MINIDREL B series is the range featuring a combined articulated-telescopic hoisting system, designed to assure maximum flexibility in the handling of loads of every kind of weight and dimension. Thanks to the hoisting system developed using a patented kinematics system, heights and distances which were previously impossible, can now be tackled using the MINIDREL B cranes.

Great versatility and top class performance making them the ideal mobile cranes for both internal or external environments, both for civil and industrial applications. Unique features which have won them the acclaim as one of the best types of telescopic handlers present on the market:

- Extensive load capacities with compact dimensions
- Exceptional working reach
- Precision and handling ease assured even in limited spaces
- Slewing boom right/left with 180° rotation and hydraulic control (TR versions)
- Maximum drive power guarantee by the 4x2, 4x4 or 6x6 traction.
- Motorized propeller unit with independent hydraulic motors on each wheel
- Adjustable speed for all manoeuvres
- Greatest autonomy thanks to special long-life batteries
- Extremely competitive maintenance costs

### CONSTRUCTION FEATURES:

- Hydraulic control carriage stabilization
- Hydraulically servo-assisted translation, lifting, extraction and steering
- Wheel steering with squared system
- Proportional speed regulator for all manoeuvres
- Hydro-braking bench with controlled deceleration
- Maximum safety thanks to anti-tilting control with patented system

### OPTIONALS / ACCESSORIES:

- Electro-hydraulic winch
- Incorporated battery charger
- Specific lifting height and telescopic arm, which can be modified to meet customer requirements
- Automatic wheel load divider for fragile flooring
- Button panel remote control
- Programmable joystick radio control
- Hydraulically controlled JIB articulation
- Eye-bolts for load gripping



# MINIDREL B series - capacity between 4.000 and 25.000 Kg

## SPECIFIC WORKING DIAGRAM

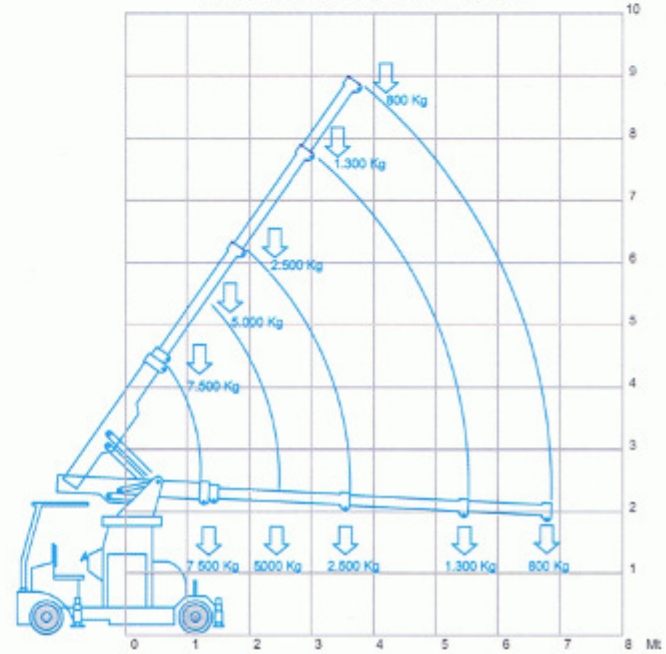
The specialized operations for which the MINIDREL B range is destined has meant that particular attention has been taken in the design stage to assure maximum performance levels in all conditions.

The result being a work diagram with an extremely wide curve, which assures exceptional capacity levels at even the points of maximum extension (figure showing the working diagram of a MINIDREL75B).

The objective has been reached thanks to ongoing studies into the kinematic response lifting boom with controlled deceleration, so that it is possible to avoid the dangerous oscillations that occur in normal use of the bridge crane, which may otherwise jeopardize the stability of the loads during the handling operations.

The use of a squared servo-assisted steering system, with translation speed control and gear inversion controlled by means of foot pedals, which means that the machine is capable of achieving an infinite number of positions, so as to assure maximum performance even over inclined surfaces.

## WORKING DIAGRAM MINIDREL 75B STD



## TABLE OF FEATURES OF THE MINIDREL B STANDARD SERIES

MODELS	40B	50B	75B	90B	125B	150B	250B
Capacity (max)	4.000 Kg	5.000 Kg	7.500 Kg	9.000 Kg	12.500 Kg	15.000 Kg	25.000 Kg
Telescopic extension (stand.)	5,00 mt	5,00 mt	5,00 mt	5,00 mt	6,00 mt	6,00 mt	7,50 mt
Lifting height (stand.)	8,00 mt	8,00 mt	8,00 mt	8,00 mt	8,50 mt	8,50 mt	10,00 mt
Width(max)	1,35 mt	1,35 mt	1,35 mt	1,50 mt	1,85 mt	1,85 mt	2,30 mt
Carriage pitch (standard)	2,18 mt	2,18 mt	2,40 mt	2,40 mt	2,50 mt	2,75 mt	3,25 mt
Version with slewing boom (TR)	N	O	O	O	O	O	S



## GB series - capacity between 100 and 750 Kg



### IMPECCABLE PERFORMANCE AND CONVENIENCE

The latest special lifting system developed by GRUNIVERPAL, the GB series with capacity of up to 750 Kg, is the response to client needs for handling in very restricted spaces all types of loads.

Thanks to its four independent wheels mounted on special bearings, the machine can also rotate on itself at 360° without the slightest effort, thereby permitting load handling in the shortest possible time.

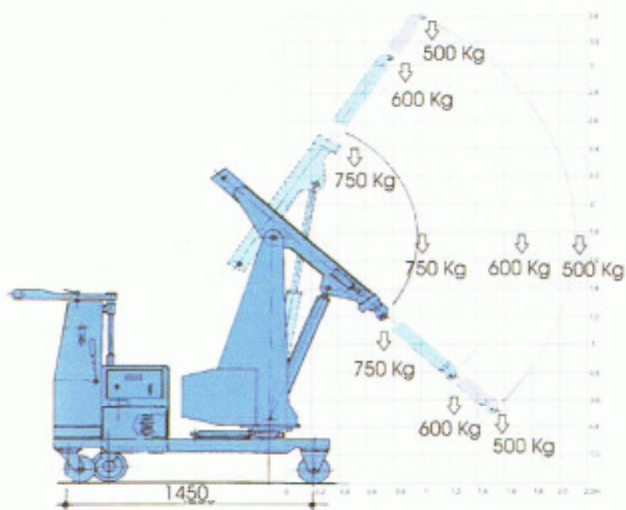
Its compact dimensions also means that it can be used in all kinds of environments, both industrial for the handling of loads in very restricted spaces, and for civil uses, where it can be used to handle any kind of material inside buildings under construction. Thanks to its very light weight, it can be transported very easily on trucks.

The scope for the customization of the boom length, the wide range of available accessories and the extremely reduced maintenance costs, and its sturdy and practical indestructible construction makes it ideal for every kind of working situation.

This compact machine of only 1400 x 800 mm reflecting all the ongoing technological know how acquired over 50 years in the field.



- Electro-hydraulic translation
- Right/left slewing boom with angle of 150°
- Telescopic boom extension of up to 2 m
- Independent battery power supply
- Incorporated battery charger
- Squared steering helm with angle of 220°
- Hydraulically-controlled variable speeds
- Load controlling anti-tilt device
- Wide range of available accessories



## GB series - capacity between 100 and 750 Kg



### IMPECCABLE PERFORMANCE AND CONVENIENCE

The latest special lifting system developed by GRUNIVERPAL, the GB series with capacity of up to 750 Kg, is the response to client needs for handling in very restricted spaces all types of loads.

Thanks to its four independent wheels mounted on special bearings, the machine can also rotate on itself at 360° without the slightest effort, thereby permitting load handling in the shortest possible time.

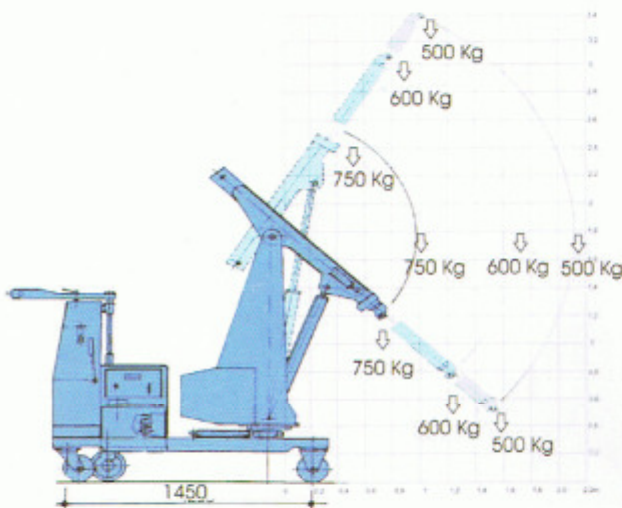
Its compact dimensions also means that it can be used in all kinds of environments, both industrial for the handling of loads in very restricted spaces, and for civil uses, where it can be used to handle any kind of material inside buildings under construction. Thanks to its very light weight, it can be transported very easily on trucks.

The scope for the customization of the boom length, the wide range of available accessories and the extremely reduced maintenance costs, and its sturdy and practical indestructible construction makes it ideal for every kind of working situation.

This compact machine of only 1400 x 800 mm reflecting all the ongoing technological know how acquired over 50 years in the field.



- Electro-hydraulic translation
- Right/left slewing boom with angle of 150°
- Telescopic boom extension of up to 2 m
- Independent battery power supply
- Incorporated battery charger
- Squared steering helm with angle of 220°
- Hydraulically-controlled variable speeds
- Load controlling anti-tilt device
- Wide range of available accessories



## **ELECTRO-HYDRAULIC MOBILE CRANES**

A complete range of mobile cranes for the handling of loads of up to 25,000 Kg

Suitable for both internal and external uses, and for both civil and industrial applications

Excellent loading capacity with compact dimensions.

Hoisting structures developed on a patented kinematic principle.

High capacity battery power.

Accuracy and handling ease in limited spaces.

Average machine life of over 30 years.

