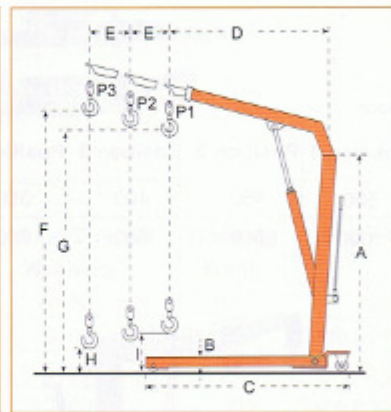


▼ Foldable Shop Crane

Unique technology of quick lifting by double action pump.

Larger capacity than normal shop cranes at 3 position.

Conforms to CE safety standard.

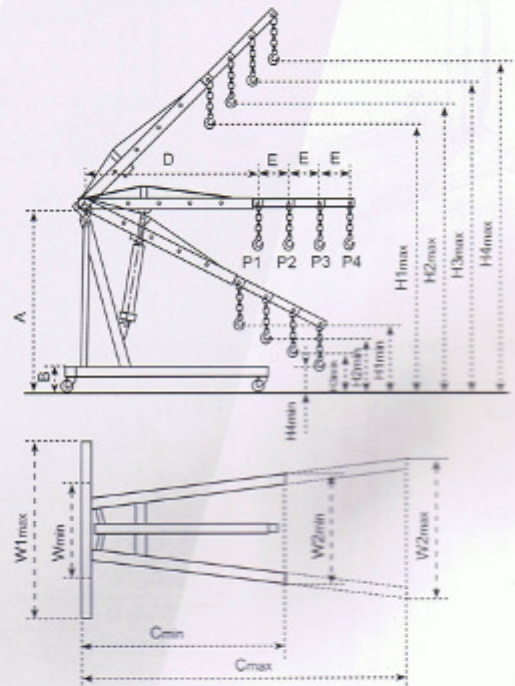


Shop crane folded

Model	Capacity at Position (kg)			Dimensions (mm)									Overall Width (mm)	Net Weight (kg)
	P1	P2	P3	A	B	C	D	E	F	G	H	I		
SCA50	500	425	350	1410	165	1510	895	102	2120	1960	150	340	970	75
SCA100	1000	800	700	1675	90	1630	1230	150	2445	2330		245	1120	115
SCA200	2000	1700	1500	1690	205	1900	1290	150	2705	2505		230	1165	165

▼ Shop Crane

Model	SCB50	SCB100	SCB200A	SCB200B	
Fodable	Yes			No	
Capacity (kg)	500	1000	2000	2000	
Capacity at Position (kg)	P1	500	1000	2000	
	P2	400	750	1500	
	P3	250	500	1000	
	P4	150	250	500	
Net Weight (kg)	75	96	95	113	
Dimensions (mm)	A	1403	1650	1403	1350
	B	200	170	200	185
	C _{min}	1710	1680	1710	1620
	C _{max}	--	--	--	2320
	D	900	1160	900	1270
	E	180	95	180	225
	W _{1min}	810	500	810	945
	W _{1max}	--	--	--	1340
	W _{2min}	1015	1070	1015	800
	W _{2max}	--	--	--	960
	H _{1min}	345	550	345	185
	H _{1max}	1820	1785	1820	1945
	H _{2min}	--	255	--	285
	H _{2max}	1960	1805	1960	2100
	H _{3min}	--	180	--	385
	H _{3max}	2100	1825	2100	2260
H _{4min}	--	180	--	485	
H _{4max}	2240	1845	2240	2410	



▼ Euro Shop Crane

Heavy duty design.
Suitable for European pallet.
Chrome plated lifting piston.
Conforms to CE safety standard.

Model	Capacity	Position 1	Position 2	Position 3	Position 4	Net Weight
SCC50	(kg) 500	500	450	400	350	81
SCC100	(kg) 1000	1000	900	800	700	103

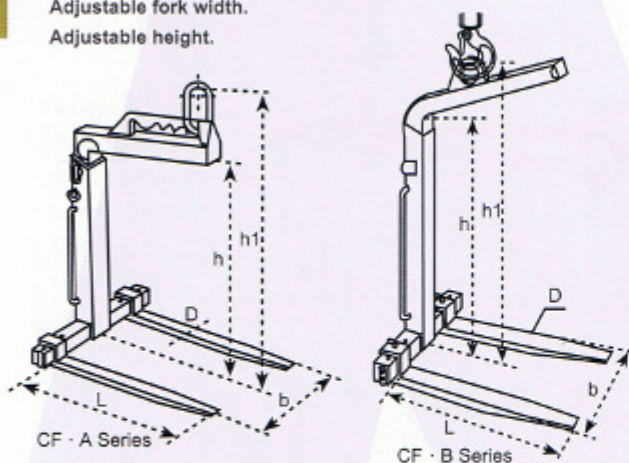


Crane

CE

▼ Crane Fork

No slings or chains necessary.
Crane operator will not need to leave cab of lorry or crane.
Forks will remain horizontal when loaded and unloaded.
Adjustable fork width.
Adjustable height.



CF · A Series
Manual balancing



CF · B Series
Self-balancing head



Model	Work Load Limit WLL (tonne)	Adjustable Fork Width b (mm)	Hook Height h1 (mm)	Effective Height h (mm)	Fork Length L (mm)	Fork Cross D (mm)	Overall Size LxWxH (mm)	Net Weight (kg)
CF10A	1	350-900	1390-1890	1100-1600	1000	100x30	1120x920x1390	130
CF20A	2	400-900	1640-2340	1300-2000	1000	120x40	1140x920x1640	200
CF30A	3	450-900	1670-2370	1300-2000	1000	120x50	1140x920x1670	250
CF50A	5	530-1000	1700-2400	1300-2000	1000	150x60	1160x1020x1700	370
CF10B	1	350-900	1420-1920	1100-1600	1000	100x30	1120x920x1530	140
CF20B	2	400-900	1655-2355	1300-2000	1000	120x40	1140x920x1775	220
CF30B	3	450-900	1720-2420	1300-2000	1000	120x50	1140x920x1850	280
CF50B	5	530-1000	1710-2410	1300-2000	1000	150x60	1160x1020x1850	380